

## Who are We?

Walters Maintenance is a pump repair and general engineering company. We specialize in pump repairs, maintenance and service. Our workshop is fully equipped to handle most size pumps and other general engineering requirement.

We are a family owned business, Since Les returned in 2001. Ian and Deb Walters have continued to operate the business with the additional staff of seven. We have worked in the engineering and pump trades for many years and have kept up to date with improvements and technology.

For all your pump and engineering needs, just give us a call, we may be able to help.

### Workshop facilities include:

Horizontal Borer  
Vertical Borer  
Metal Spraying  
Surface Grinding  
Cylindrical Grinding  
Stainless Steel Welding  
Cast Iron Welding  
3M Centre Lathe  
Radial Drill  
Milling



Walters Maintenance Pty Ltd  
Factory Address:  
Unit 3 & 4/  
48-50 Regentville Road,  
Jamisontown. Penrith NSW 2750  
Phone: 02 4721 7515  
Fax: 02 4721 7589  
Ian's Mobile: 0409 991 759  
Deb's Mobile: 0417 258 877



Specializing in  
Pump Repairs  
& General  
Engineering

#### Our Web Address:

[www.waltersmaintenance.com.au](http://www.waltersmaintenance.com.au)

You can contact Ian at:

[ian@waltersmaintenance.com.au](mailto:ian@waltersmaintenance.com.au)

Or Deb at:

[deb@waltersmaintenance.com.au](mailto:deb@waltersmaintenance.com.au)

For all your pump repairs,  
General engineering, and  
refurbishing parts.

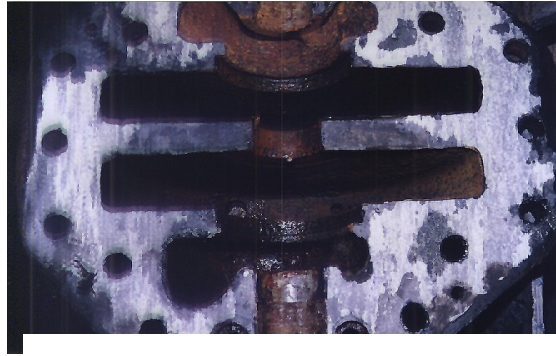
## Pump Repairs are our Specialty.



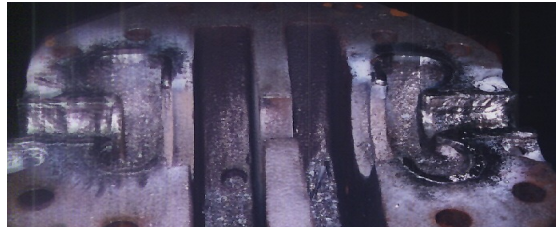
Walters Maintenance specializes in Pump repairs, From the smallest to the largest pumps we can offer advice, service or repairs. Bearings, mechanical seals, metal spraying and boring. We can cater for most size pumps. On-site evaluations can be arranged. We have serviced pump for the shire Councils, Such as Parkes, Bourke and Central Darling Shire and Cobar Water Board. We also service pumps for companies like SnowyWS, Sydney Water and Transfield. We believe our service to be fast, efficient and reliable, Can we help you? Call us today to find out.

## What's involved?

Once a pump is stripped down we can then go to work.

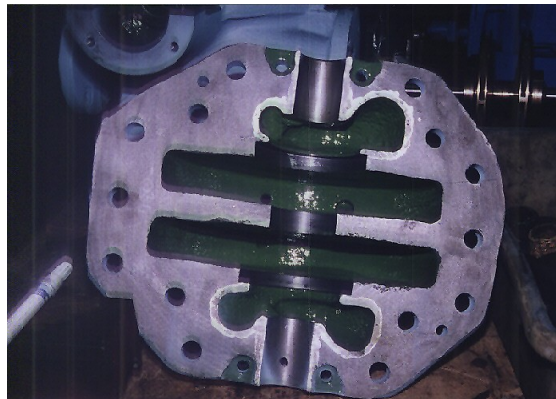


Before we start corrosion is evident  
Parts are cleaned and readied for repair.



Any necessary welding or metal spraying is carried out.

The finished part is ready to be assembled.

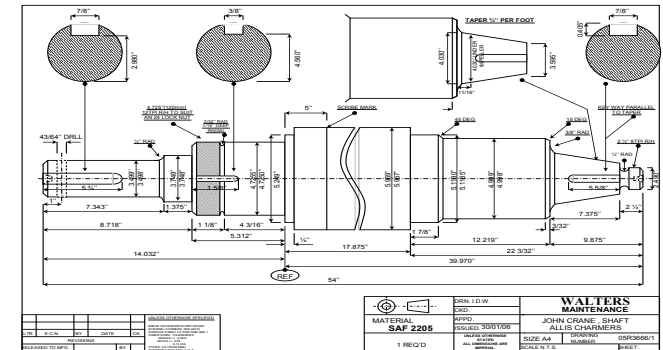


## Parts Ain't Parts!

We use and recommend only the most reliable parts or suppliers.

Mechanical Seals supplied or refurbished by John Crane Australia.

We can also recommend coating of internals of your pump to give your pump extended life and better efficiency and lower power consumption.



We can provide engineered drawings on modification and digital photos presentation on all completed pump work.

Whether it's for pumps or general engineering we can help.